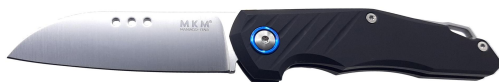


**Antica Coltelleria Tavella / Folding
knives**

MKM - Root

cod. **MK RT-A**



Weight: 63 gr - 2.22 oz
Blade: M390 stainless steel
Hardness: HRC 58-60
Blade Coating: satin
Handle: black anodized aluminum
Screws: stainless steel
Designer: Jens Anso
Info

Slip joint folding knife with Bohler M390 satin steel blade, and black aluminum handle.
The three holes on the blade, positioned in the best lever point for an easier opening, replace the classic opening "nail" as well as making it more comfortable.
Spring and screws in stainless steel.
Sold with leather sheath with magnetic clip.

gallery

